

Harrow in LEAF

Registered Charity No. 1108144

Affiliated to the RHS, NVS and NDS

at the

Headstone Village Show

Headstone Manor, Pinner View, Harrow, HA2 6PX



Bank Holiday Monday 31st August

12 noon to 5pm

2020 SHOW SCHEDULE

Open to All

Entries Secretary: Judy Walker judywalker50@talktalk.net ☎020 8427 2772

Enquiries about exhibits

Horticultural: Ron: ronjeandickens@hotmail.com

☎020 8422 1609

Honey: Sarah: sarahjamesmollie@gmail.com

☎07895 845932

Other: Frances: hgoldingay@aol.com

☎020 8907 0188

This schedule can be viewed or downloaded at annualshow.harrowinleaf.org.uk

MansiFlorist

My own Flowers

Est. 44 years

We deliver flowers
locally, nationally and internationally

3 Pinner Green, Pinner, HA5 2AF

Tel: 0208 868 2798

www.mansiflowers.co.uk



THE PEOPLE'S CHOICE CLASS

ODD-SHAPED FRUIT
or VEGETABLE



This class will be judged by visitors to the show solely on
the appearance of the exhibit

- Any unusual or funny fruit or vegetable, as grown, no accessories
- More than one entry allowed up to a maximum of THREE
- Free entry.

Welcome once again to the Harrow in LEAF Annual Show at Headstone Manor for 2020

This great Harrow community event aims to be bigger and better than in previous years.

Headstone Manor has been part of local agricultural history since the sixteenth century. Once again there will be plenty of exhibits from local gardeners, bee-keepers, creative artists, photographers and bakers. There are plenty of categories for you to enter so don't be shy. Why not try your luck and put in an entry?

The ever popular oddly-shaped vegetable and Harvest Festival Trug categories will still be in the 2020 show. We have also increased the number of junior categories and introduced a digital art category. Juniors can also enter the main classes.

Even if you don't exhibit please come along as it's a good family day out. You will be able to enjoy the café, the museum, craft stalls, plants and of course the display of local craft and produce. Plenty to keep the whole family occupied.

Don't forget, if you put in an entry, you get free admission to the show - another incentive to be part of Harrow's summer celebration.

Don't be afraid of showing

Our guide to showing
gives lots of hints and advice

Available at annualshow.harrowinleaf.org.uk
or from the Entries Secretary

Class C

Top Vase

**Simple Rules
Free Entry
Prize Vouchers**



TOP VASE COMPETITION RULES

1. The Top Vase class is for a vase of mixed flowering stems containing a total of between five and ten stems, taken from a minimum of two different kinds of plants. Please note that it is two different KINDS of plants; two varieties of the same plant are NOT two kinds.
2. The display will be judged out of a total of 35 points, split into 25 points for the colour, form, condition, quality and freshness of the flowers on display and 10 marks for the overall presentation and effect of the flowers in the vase. The vase will be viewed from all directions. Judging of the flowers should be to normal rules used for other Classes.
3. Stems used in the display must be showing flowers only; no seed heads or berries will be allowed.
4. The vase can be any shape and size and made from any material, but must be in proportion to the display. No marks are awarded for the vase itself.
5. No accessories, such as bows and additional foliage, will be allowed. Foliage which is growing naturally from the flowering stem, and still attached to the stem, is allowed. Packing material, including florist's foam, to keep the stems in place is allowed.
6. Prizes

1 st	£10.00 voucher and Certificate
2 nd	£ 5.00 voucher
3 rd	£ 3.00 voucher

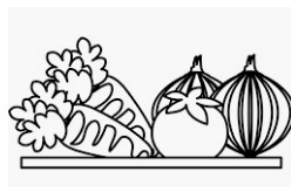
Class B

Top Tray

Simple Rules

Free Entry

Prize Vouchers



TOP TRAY COMPETITION RULES

1. This class is for a collection of **three** types of vegetables taken from the following list of fifteen, quantities as shown.

3 Onions	3 Potatoes	3 Courgettes	6 French beans
6 Pea (pods)	3 Red beets	2 Sweetcorn	6 Runner beans
2 Cauliflowers	3 Carrots	3 Peppers	2 Aubergines
3 Parsnips	6 Tomatoes	2 Cucumbers	

Carrots and parsnips must have foliage trimmed to 7.5cm. Peas and beans must have stalk attached. Tomatoes must have their calyces.

Each individual type of vegetable will be judged out of a total of 20 points. This is split into three sections: 7 points for size, shape and colour, 7 points for condition and 6 points for uniformity. The overall mark will be out of a total of 60.

2. All vegetables are to be displayed for effect. The vegetables must be displayed within an area of 45cm by 60cm (18" x 24"), without bending any part of them. No part of the exhibit may exceed the size of the tray. A tray or board of these dimensions may be used to display the vegetables, or the area can simply be marked on the staging. Where a tray has a lip or edge, it is the internal measurements that must not exceed 45cm by 60cm (18" x 24").
3. A black cloth is permitted, and the tray may be painted. Parsley is allowed for garnishing, but no other foliage or accessories, such as plates, sand, rings and so on, will be allowed. Onion tops may be tied or whipped using raffia or string
4. Prizes
- | | |
|-----------------|--------------------------------|
| 1 st | £10.00 voucher and Certificate |
| 2 nd | £ 5.00 voucher |
| 3 rd | £ 3.00 voucher |

CLASS A Open Challenge Cup 'Harvest Festival Trug' see page 14

VEGETABLES SECTION

CLASS B Top Tray see page 5

CLASS

♦♦ = double points

- 1 MINI COLLECTION of five different kinds of fruits and/or vegetables, one of each. Space, 300mm run of table
- 2 POTATOES, four white, one variety
- 3 POTATOES, four coloured, one variety
- 4 COLLECTION of POTATOES, three distinct varieties, three of each♦♦
- 5 BEETROOTS, three, one variety, approx. 75mm tops
- 6 CARROTS, three, long pointed, one variety, approx. 75mm tops
- 7 CARROTS, three stump rooted, one variety, approx. 75mm tops
- 8 PARSNIPS, three, one variety, approx. 75mm tops
- 9 CABBAGES, two, one variety, approx. 75mm stem
- 10 ONIONS, three, one variety, each bulb over 250g
- 11 ONIONS, four, one variety, no bulb to exceed 250g
- 12 STRING or PLAIT OF ONIONS, minimum 5, maximum 10 bulbs
- 13 SHALLOTS, exhibition, nine, one variety
- 14 SHALLOTS, pickling, nine, one variety, not to exceed 30mm diameter
- 15 BEANS, runner, six, one variety
- 16 BEANS, runner, one cluster
- 17 BEANS, any other bean, six, one variety
- 18 LONGEST BEAN
- 19 TOMATOES, large, not less than 75mm diameter, three, one variety
- 20 TOMATOES, medium, over 35mm, under 75mm diameter, six, one variety
- 21 TOMATOES, small/cherry, not more than 35mm diameter, nine, one variety
- 22 TOMATOES, one truss
- 23 MARROWS, table, two, one variety, not to exceed 35cm in length
- 24 HEAVIEST MARROW
- 25 RHUBARB, three sticks, one variety, approx. 75mm tops
- 26 CUCUMBERS, two, one variety
- 27 SWEETCORN, two, one variety
- 28 COURGETTES, three, one variety, not to exceed 150mm in length
- 29 PUMPKIN, one pumpkin, one variety
- 30 SQUASHES, two squashes, one variety
- 31 HERBS, one or more varieties displayed in container, max.diameter 50mm
- 32 ANY OTHER KIND OF VEGETABLE not mentioned above, quantities as listed on page 8, points below 18
- 33 ANY OTHER KIND OF VEGETABLE not mentioned above, quantities as listed on page 8, points 18 or above
- 34 SALAD COLLECTION, four different kinds, one of each, chosen from those asterisked on page 8

FRUITS SECTION

Exhibits are to be shown unpolished and with stalk attached.

- 35** APPLES, four dessert, one variety
- 36** APPLES, three cooking, one variety
- 37** PEARS, four, one variety
- 38** PLUMS, nine, one variety
- 39** BLACKBERRIES, twelve, one variety, with stalk
- 40** ANY OTHER FRUIT of one kind, quantities as listed on page 9

PEOPLE'S CHOICE ODD-SHAPED FRUIT or VEGETABLE (see p 2)

SOME WINNING TIPS FROM THE JUDGE

- Onions: When ripe, cut stem to within 75mm, bend stem over, trim and tie with green wool or raffia. Trim off roots and stage on rings.
- Shallots: May be staged on a plate of sand.
- Carrots: Main root to be intact but trim off side roots.
- Cabbage: Take off outer leaves if caterpillar damage is visible.
- Beans & Peas: Must be attached to stalks.
- Tomatoes: Calyx must be attached to fruits.

Also see our Guide to Showing available at
annualshow.harrowinleaf.org.uk or from the Entries Secretary

PLANT SALE



at the Harrow in LEAF HQ
 West Harrow Allotment Site HA1 4HE
 Entrance by the side of West Harrow Station

SATURDAY 16th MAY
11am - 1pm

**Ornamental, fruit and vegetable plants
 sold at bargain prices**

Refreshments at the Pop-up Café Free admission

**Table hire: £8 booked and paid for in advance, £9 on the day
 Call 020 8863 7558**

QUANTITIES and POINTING

Unless otherwise stated in the individual class, the numbers and pointing of each kind of vegetable and fruit to be shown in the collections and all individual classes are as follows,

VEGETABLES

	No	Pts		No	Pts
Artichokes, globe	2	15	Leeks	3	20
Artichokes, Jerusalem	6	10	Lettuce, loose leaf*	2	12
Aubergines	3	18	Lettuce, other*	2	15
Beans, broad, pods	6	15	Marrows	2	15
Beans, runner	6	18	Mushrooms	8	15
Beans, any other kind	6	15	Onions, over 250g	3	20
Beet, globe & cylindrical*	3	15	Onions, 250g or under	4	15
Beet, long*	3	20	Onions, pickling	9	12
Broccoli, sprouting	12	15	Onions, salad*	6	12
Broccoli, colour-headed	2	15	Parsnips	3	20
Brussels sprouts	12	15	Peas, pods	6	20
Cabbages	2	15	Peppers (sweet or chilli)*	3	15
Carrots, long pointed*	3	20	Potatoes	4	20
Carrots, stump-rooted*	3	18	Pumpkin	1	10
Cauliflowers	2	20	Radish, small salad*	6	12
Celeriac	2	15	Radish, oriental/winter*	3	15
Celery, trench*	2	20	Rhubarb	3	12
Celery, self-blanching*	2	18	Shallots, exhibition	9	18
Courgettes	3	12	Shallots, pickling	9	15
Cucumbers under protection*	2	18	Squashes, summer	2	12
Cucumbers, outdoor*	2	15	Squashes, winter	2	10
Endive*	2	15	Sweetcorn	2	18
Fennel	2	15	Tomatoes, medium*	6	18
Garlic, whole	4	15	Tomatoes, small/novelty*	9	12
Kohlrabi	3	12	Toms beefsteak/large*	3	15
			Turnips	3	15

* see Class 34 on page 6

FRUITS

	No.	Pts.
Apples, cooking	3	18
Apples, dessert	4	20
Apricots	6	16
Blackberries	12	12
Cherries, sweet	10	16
Currants, black, strigs	8	12
Currants, other than black, strigs	8	12
Damsons	6	8
Figs	3	16
Gooseberries	12	12
Grapes, glasshouse, one bunch		20
Grapes, outdoor, one bunch		16
Loganberries	12	12
Medlars	10	8
Melon	1	18
Nectarines	4	20
Nuts	10	12
Peaches	4	20
Pears, cooking	4	18
Pears, dessert	4	20
Plums, cooking	9	14
Plums, dessert	9	16
Quinces	6	12
Raspberries	12	12
Strawberries	6	16



THE PEOPLE'S CHOICE CLASS

ODD-SHAPED FRUIT or VEGETABLE



This class will be judged by visitors to the show solely on the appearance of the exhibit

- Any unusual or funny fruit or vegetable, as grown, no accessories
- More than one entry allowed up to a maximum of THREE
- Free entry.

FLOWERS SECTION

CLASS C

TOP VASE see page 4

CLASS

CHRYSANTHEMUMS SECTION

- 41** ONE VASE, THREE STEMS, SPRAY, one or more variety
- 42** ONE VASE, ONE SPECIMEN SPRAY, one stem
- 43** ONE BOWL of SPRAYS, three or more varieties, exhibitor's own bowl not to exceed 25cm in diameter

DAHLIAS SECTION

SUPPLEMENTARY RULES

Judging will be in accordance with the NDS tabulation of judging sizes as follows:

GIANT FLOWERED	over 260mm in diameter
LARGE FLOWERED	not exceeding 260mm in diameter
MEDIUM FLOWERED	not exceeding 220mm in diameter
SMALL FLOWERED	not exceeding 170mm in diameter
MINIATURE FLOWERED	not exceeding 115mm in diameter
SMALL BALL	not exceeding 170mm in diameter
MINIATURE BALL	not exceeding 115mm in diameter
LARGE POMPON	not exceeding 83mm in diameter
STANDARD POMPON	not exceeding 55mm in diameter

CLASS D THREE VASES THREE distinct classifications,
ONE classification per vase,
quantities as in classes 44 – 56

CLASS

- 44** ONE VASE, ONE BLOOM, giant or large decorative
- 45** ONE VASE, THREE BLOOMS, medium decorative
- 46** ONE VASE, FIVE BLOOMS, small decorative
- 47** ONE VASE, FIVE BLOOMS, miniature decorative
- 48** ONE VASE, ONE BLOOM, giant or large cactus or semi-cactus
- 49** ONE VASE, THREE BLOOMS, medium cactus and/or semi-cactus
- 50** ONE VASE, FIVE BLOOMS, small cactus and/or semi-cactus
- 51** ONE VASE, FIVE BLOOMS, miniature cactus and/or semi-cactus
- 52** ONE VASE, FIVE BLOOMS, small ball
- 53** ONE VASE, FIVE BLOOMS, miniature ball
- 54** ONE VASE, FIVE BLOOMS, pompon
- 55** ONE VASE, THREE BLOOMS, water lily
- 56** ONE VASE, FIVE BLOOMS, any size, all varieties
- 57** ONE VASE, THREE BLOOMS, small, any type, NOVICE (see rule 17)

CLASS **ROSES SECTION**

- 58** ONE SPECIMEN BLOOM
- 59** CLUSTER FLOWERED, three stems, one or more varieties
- 60** LARGE FLOWERED, three stage blooms, one variety, one bud, one perfect, one full bloom
- 61** MIXED BOWL, arranged for all-round effect

CLASS **GENERAL FLOWERS SECTION**

- 62** ASTERS, ANNUAL, six blooms
- 63** GLADIOLI, three spikes in one vase, one or more varieties
- 64** PERENNIALS, three distinct kinds, own vase not to exceed 15cm diameter
- 65** PERENNIALS, one kind, own vase not to exceed 15cm diameter
- 66** THREE PELARGONIUM STEMS, one flower head on each plus leaves
- 67** SIX SPECIMEN FUCHSIA HEADS, one or more varieties
- 68** VASE of BEE-FRIENDLY FLOWERS, foliage allowed
- 69** VASE of MIXED FOLIAGE SPRAYS. BERRIED SPRAYS allowed, but foliage sprays must predominate

CLASS **POT PLANTS SECTION**

Pot not to exceed 25cm diameter, unless otherwise stated

- 70** FLOWERING BEGONIA, indoor or outdoor grown
- 71** FLOWERING PELARGONIUM
- 72** FLOWERING FUCHSIA
- 73** FLOWERING BULB(S), one pot or pan of one kind
- 74** ANY OTHER FLOWERING PLANT (excluding Begonia, Fuchsia, Pelargonium and Flowering Bulbs)
- 75** FOLIAGE PLANT
- 76** A CONTAINER of mixed plants, flowering and/or foliage
- 77** THREE POT PLANTS, one kind per pot, three different kinds
- 78** PLANT GROWN IN AN UNUSUAL CONTAINER, container not to exceed 30cm x 30cm, to be judged on overall effect.

CLASS **CACTI and SUCCULENTS SECTION**

- 79** ONE SPECIMEN CACTUS
- 80** ONE SPECIMEN SUCCULENT, other than Cactus
- 81** GROUP OF THREE DIFFERENT CACTI, three pots, each pot containing one of one kind
- 82** GROUP OF THREE DIFFERENT SUCCULENTS other than Cacti, three pots, each pot containing one of one kind

FLORAL ART SECTION

SUPPLEMENTARY RULES

Exhibits to be staged on tables, space allowed 30" wide by 24" deep, height unlimited. Natural plant material only to be used, to include fresh, dried or preserved, which may be coloured. Cut ends of fresh plant material must be in water or water retaining material, eg. oasis, with the exception of material sustainable without water, eg. air plants, moss or turf. Drapes with own stand and bases are allowed. The exhibitor need not have grown the plant material.

CLASS

- 83** TIME FOR A CUPPA — an arrangement in a teapot, accessories allowed.
- 84** SPECIAL OCCASION — an arrangement for a festival or occasion, the festival or occasion **to be named**. Accessories allowed.

HOME PRESERVES SECTION

All preserves to be exhibited in glass jars or bottles as appropriate.
Size approx. 12oz (340g) to 1lb (454g)

SUPPLEMENTARY RULES

Jars or bottles should be plain, clear glass of correct size.
Jars or bottles should be clean with no commercial marking.
Small plain labels, attached to the jar or bottle, should state contents, type and full date of making.
Jams, jellies and curds should be covered with a waxed disc and cellophane, or with a twist or push-on top.
Chutneys, pickles and sauces should be covered with a vinegar-proof solid top.

CLASS

- 85** JAM, stone fruit/s, one jar
- 86** JAM, soft fruit/s, one jar
- 87** JAM, any other
- 88** MARMALADE, coarse/ chunky/ rough cut, one jar
- 89** MARMALADE, fine cut or jelly, one jar
- 90** CURD, any flavour, one jar
- 91** FRUIT JELLY, any flavour, one jar
- 92** COLLECTION of THREE JARS, selected from classes above
- 93** CHUTNEY, one jar
- 94** PICKLED ONIONS OR SHALLOTS, one jar
- 95** ANY OTHER PICKLED ITEM including sauces, one jar or bottle

COOKERY SECTION

SUPPLEMENTARY RULES

Exhibitors to use own recipe, unless otherwise stated.

Bread machines must not be used.

Cakes and flans should be 7"- 8" (18cm - 20cm approx.) diameter, unless otherwise stated.

Individual plastic covers will be available for all baking classes except classes 96 and 97

No fresh cream to be used in any class. All exhibits will be cut for judging.

CLASS

- 96** LOAF eg white, brown, soda, any shape, approx 1lb
- 97** BREAD, any other
- 98** CAKE WITH A VEGETABLE OR FRESH FRUIT, recipe to be provided
- 99** FOUR FRUIT SCONES
- 100** VICTORIA SPONGE, jam filled, undusted
- 101** FOUR CHEESE BISCUITS, to recipe on page 21
- 102** ROUND OF SHORTBREAD
- 103** FOUR SQUARES OF TIFFIN CAKE, to recipe on page 21
- 104** LEMON DRIZZLE CAKE



The Home of The Headstone Village Show!

Keep up-to-date with news, offers and special events by joining our brand new mailing list today at:

www.headstonemanor.org

NEW Website Launching Spring 2020



Facebook.com/HeadstoneManor



@HeadstoneManor1

Headstone Manor & Museum PinnerView, Harrow, HA2 6PX

020 8863 6720 www.headstonemanor.org

HOME-MADE WINE, BEER and CIDER SECTION

SUPPLEMENTARY RULES

Wines must be shown in plain, clear glass standard bottles with shoulders (slightly green-tinted bottles will be accepted) approx 750ml capacity. Wine bottles should be filled to leave an air space of between 5mm and 20mm. Stoppers for wines must be cork with flanged white plastic tops.

Beer must be shown in 1 pint or 500ml standard brown beer bottles, with gold crown cork seals. Beer bottles should be filled to leave an air space of between 15 and 25mm. Cider to be in clear glass bottles, minimum 500ml.

Liqueurs to be in clear glass bottles, minimum 250ml, with an air space of between 15 and 25mm.

Wines, beers and ciders must have been made by the Exhibitor by the process of fermentation and must not contain added alcohol.

A label will be provided, showing only the Class number and the Exhibitor number.

CLASS

- 105** COLLECTION of WINE, three bottles, one red, one white and one rosé
- 106** TABLE WINE, red, dry, one bottle
- 107** AFTER DINNER WINE, red, sweet, one bottle
- 108** TABLE WINE, rosé medium, one bottle
- 109** TABLE WINE, white to golden, dry, one bottle
- 110** TABLE WINE, white to golden, sweet, one bottle
- 111** LAGER or BEER, one bottle
- 112** CIDER, any type, one bottle
- 113** LIQUEUR, labelled according to style – Fruit base, Chocolate/Coffee base or Herb/Spice base

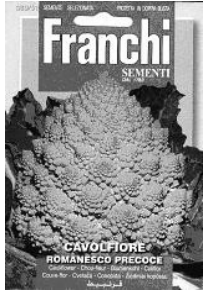
CLASS A

OPEN CHALLENGE CUP

‘Harvest Festival Trug’

A container artistically filled with nature’s products

- Open to any society, group, allotment site or individual
- The container can be a trug, tray or shallow basket, with or without a handle.
- All horticultural produce should have been grown by the exhibitor.
- Any other items should have been made by the exhibitor from raw materials
- Space allowed 600mm x 450mm. Free entry.



Franchi Seeds (1783)

Franchi are 7th generation seedsmen,
and because we are seed producers, our
packet quantities are legendary

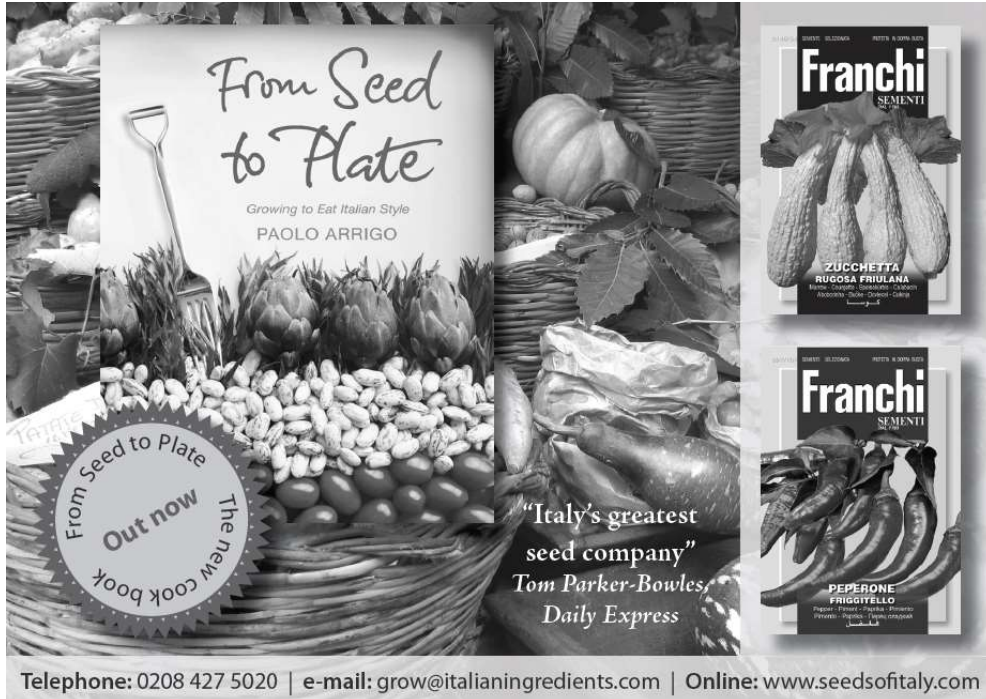
Local varieties, locally produced

Call or e-mail us for a free catalogue



D2 Phoenix Business Centre, Rosslyn Crescent,
Harrow, HA1 2SP
Tel: 0208 427 5020

e-mail: grow@italianingredients.com
online: www.seedsofitaly.com



Telephone: 0208 427 5020 | e-mail: grow@italianingredients.com | Online: www.seedsofitaly.com

ARTS AND CRAFTS SECTIONS

CRAFTS SECTION

CLASS

- 114 CROCHET ITEM OR SET
- 115 HAND-KNITTED ITEM OR SET
- 116 QUILTED ITEM
- 117 EMBROIDERY ITEM, any subject, material, thread or stitch
- 118 WOODEN ITEM, other materials allowed
- 119 SOFT TOY, any material or technique
- 120 RECYCLING, an item made mainly from recycled materials
- 121 FELT BROOCH, with fastening, any technique. Accessories allowed
- 122 ANY OTHER CRAFT ITEM not specified in other craft classes

PHOTOGRAPHY SECTION

SUPPLEMENTARY RULES

Print size to be between 18cm x 13cm and 21cm x 15cm, which includes 7" x 5", 8" x 6" and A5 sizes.
Maximum exhibit size 26cm x 21cm.
Exhibits **MUST** be mounted, but not framed.
Exhibits **MUST** have Exhibitor's name and class number on the back.
Any marks or writing on the front should be covered.
Photographs need not be self-processed.

CLASS

- 123 WHAT'S THE TIME — any form of timepiece
- 124 LET'S RELAX — people or animals relaxing
- 125 BLUE — the colour blue as a prominent feature
- 126 THE BEAUTY OF FUNGI — including fungus, mould and/or lichen
- 127 DOORS AND/OR WINDOWS — black and white
- 128 HISTORIC HARROW — any aspect
- 129 FRUIT(S) — in natural form, in any setting

Exhibitors may offer their craft, photography or paintings for sale

PAINTINGS SECTION

SUPPLEMENTARY RULES

All artwork **MUST BE SUITABLY MOUNTED** or **FRAMED FOR HANGING** and **MUST** have the Exhibitor's name on the back.

Signed artwork must have the signature covered.

Artwork must not be a copy of any other artist's work.

CLASS

- 130** REFLECTIONS — any medium
- 131** BE SEATED — a seat in an outdoor setting, any medium
- 132** ANIMAL PORTRAIT — any medium
- 133** HAND(S) — pen, pencil drawing, may be coloured
- 134** SEASONAL STUDY — wildlife in a seasonal setting, any medium
- 135** STILL LIFE— with glass in any form, watercolour
- 136** ABSTRACT — any medium
- 137** COLLAGE — any material
- 138** DIGITAL ART – any subject, A4 maximum size

Exhibitors may offer their craft, photography or paintings for sale

JUNIOR SECTION

EXHIBITORS UNDER 6 YEARS OF AGE

CLASS

- 139** FRUIT or VEGETABLE ANIMAL — using vegetables and/or fruit, accessories allowed
- 140** DECORATED STONE

EXHIBITORS 6 TO 10 YEARS OF AGE

- 141** TWO JAM TARTS
- 142** WHAT MAKES ME HAPPY — photograph
- 143** MY FAVOURITE ANIMAL — painting or drawing

EXHIBITORS 11 TO 16 YEARS OF AGE

- 144** TWO BROWNIES
- 145** WHAT MAKES ME HAPPY — photograph
- 146** CARTOON— painting or drawing

HONEY, MEAD and BEESWAX SECTION

<u>Trophy</u>	<u>Awarded for</u>	<u>2019 Winner</u>
GEC Cup	Highest points in Section	W Fitzmaurice
Rogers Cup	Best Honey in Show	W Fitzmaurice
Heather Cup	Best Honey in Class 154	C Geheran
Harry Marsh Shield	Most points in Novice classes	A Karlsson
Mrs Garbe Bowl	Best Tablet of Beeswax	W Fitzmaurice
Wembley Cup	Best Handmade/Sculpted Beeswax	J Telfer
Association Cup	Best Honey Cake	C Geheran
Association Mead Cup	Best Dry Mead	C Geheran
Garbe Cup	Best Sweet Mead	C Geheran
Gardner Cup	Best Comb for Extraction	W Fitzmaurice
Ernest Hayllar Trophy	Best Observation Hive	J Telfer
John Harley Trophy	Best Photograph	W Fitzmaurice
Dr Timmin's Rosebowl	Best exhibit in Display Class	D Tylden-Pattenson
HBKA Children's Trophy	Best Children's Art	Not awarded
Zoe Puxley Cup	Best Beeswax Candle	W Fitzmaurice
BBKA Blue Ribbon	Best exhibit in Section	W Fitzmaurice
HBKA Centenary Trophy	BBKA Blue Ribbon	W Fitzmaurice
Special Centenary Cup	School Junior Artwork	E Karapaty

SUPPLEMENTARY RULES

- All honey must be the produce of the Exhibitor's own bees.
- Except for classes 154 and 179 extracted honey must be exhibited in matching commercial squat pattern 454g (1lb) clear glass honey jars with matching lids.
- Frames must be displayed in a glazed, bee-proof housing.
- Mead must be shown in clear colourless glass, punted, bottles of round section of approximately 75cl (26 fluid ounces) capacity with rounded, not sloping, shoulders and without lettering of any kind. Bottles with shallow punts are acceptable. Only cork stoppers with white plastic flanges are to be used.
- No alcohol or flavouring may be added to mead but additions such as acids, nutrients and tannin may be used.
- Exhibits must bear no mark or identification of ownership other than NBK standard labels, which will be provided by HBKA when staging the exhibit, and in the case of mead and honey these labels must be affixed to allow between 10mm and 15mm between the edge of the label and the bottom of the jar or bottle.
- On frames, place labels at the top right hand corner of the vertical transparent face of the case and the duplicate on the top of the horizontal bar of the frame.

HONEY, MEAD and BEESWAX SECTION contd

- Labels for cut comb shall be affixed one on the lid and the duplicate on the long side of the container.
- If a show case is used for wax, one label must be affixed to the glass and the duplicate on the surface of the wax to be shown uppermost. Small blocks of wax shall have a label affixed to one side of each item in the class.
- Multiple entries, allowed in this Section only, are limited to a maximum of THREE in any one Class. Each multiple entry will be identified by an identity letter (A, B or C) after the Class number on the entry card.
- The "NOVICE" Classes are open only to Exhibitors who have never won a first prize in this Section.

CLASS

- 147** TWO JARS LIGHT HONEY 454g (1lb)
- 148** TWO JARS MEDIUM HONEY 454g (1lb)
- 149** TWO JARS DARK HONEY 454g (1lb)
- 150** TWO JARS GRANULATED or CREAMED HONEY 454g (1lb)
- 151** TWO JARS CHUNK HONEY 454g (1lb)
- 152** ONE JAR HONEY any colour 454g (1lb), to be judged on taste, aroma and viscosity only
- 153** ONE JAR HONEY any colour 454g (1lb) GIFT CLASS (proceeds to Show funds)
- 154** TWO JARS HONEY, a matched pair in any type and size of clear colourless glass or plastic container up to 454g (1lb) except for jars eligible for any other class
- 155** TWO JARS HONEY, any colour 454g (1lb), NOVICE CLASS
- 156** TWO JARS GRANULATED or CREAMED HONEY 454g (1lb), NOVICE CLASS
- 157** ONE CONTAINER OF CUT COMB, minimum gross weight 200g (7oz)
- 158** ONE COMB FOR EXTRACTION
- 159** ONE COMB FOR EXTRACTION FROM '2020' MARKED FRAME, to show good management of a designated new frame (frames available via Harrow Beekeepers' Association from April)
- 160** BEES IN AN OBSERVATION HIVE (one to three combs)
- 161** ONE TABLET BEESWAX, 200-255g (7-9oz), not less than 13mm (½ in) thick
- 162** SIX 28g-32g (1oz) BLOCKS OF BEESWAX, natural colour, all matching
- 163** A MOULDED BEESWAX EXHIBIT (may be coloured)
- 164** A HANDMADE or SCULPTED BEESWAX EXHIBIT (may be coloured)
- 165** THREE MATCHING MOULDED BEESWAX CANDLES, natural colour
- 166** THREE DIPPED BEESWAX CANDLES, natural colour
- 167** BEESWAX POLISH, paste or cream, any colour, weight or container size

HONEY, MEAD and BEESWAX SECTION contd

- 168** BEESWAX COSMETIC, exhibit should be in a small container with card describing the product and ingredients
- 169** ONE STANDARD BOTTLE OF MEAD, DRY
- 170** ONE STANDARD BOTTLE OF MEAD, SWEET
- 171** DRINK (alcoholic or non-alcoholic) incorporating honey, other than mead. To be displayed in any clear glass or plastic bottle labelled with the name of the drink. Recipe to be provided.
- 172** HONEY CAKE to exhibitor's own recipe (recipe must be provided)
- 173** ANY ITEM OF HONEY COOKERY, other than honey cake, incorporating APPLE as an ingredient (recipe must be provided).
- 174** HARROW HONEY LABEL, an original design, to fit a 454g (1lb) jar of honey. Must meet honey label regulations, be suitable for quantity production, and be displayed on an A5 card
- 175** GREETINGS CARD, relating to any aspect of beekeeping, any material, any size.
- 176** ONE MOUNTED PHOTOGRAPH on any aspect of beekeeping, black & white or colour, max size of print 8 x 10in, to be displayed mounted but not framed.
- 177** WRITER'S CORNER, short story, poem or limerick, max 200 words, on any aspect of beekeeping. State age if under 16.
- 178** CHILDREN'S PAINTING (16 years of age and under), a drawing or painting relating to beekeeping, any size. Age to be stated on exhibit.
- 179** DISPLAY CLASS, composite display of at least six different products of the hive. To be judged on artistic presentation. Max size 46cm (18in) square (double points awarded in this class)



PLANT SALE

at the Harrow in LEAF HQ
West Harrow Allotment Site HA1 4HE
Entrance by the side of West Harrow Station



SATURDAY 16th MAY

11am - 1pm

Ornamental, fruit and vegetable plants at bargain prices

Refreshments at the Pop-up Café **Free admission**

Table hire: £8 booked and paid for in advance, £9 on the day
Call 020 8863 7558

Cheese Biscuits

Pre-heat oven to Gas Mark 3 or 170°C fan
Baking sheet, greased and lined

50g plain flour	pinch of salt
50g grated Parmesan	pinch cayenne pepper
50g soft butter	twist black pepper
	50g grated Cheddar cheese

Sift flour, salt, cayenne and black pepper into a bowl. Add the Parmesan and butter and rub in the butter until the mixture is at the crumbly stage. Using a fork stir in the Cheddar cheese and then with your hands bring the mixture together to form a dough. Roll out to around 3mm thickness and cut into approx. 6cm rounds. Place on the baking sheet and bake for 10-12 mins until golden brown. The biscuits will crisp as they cool.



Tiffin Cake

Cake tin 20cm x 20cm

110g butter	225g Digestive biscuits, crushed
2 tablespoons sugar	25g raisins
2 tablespoons golden syrup	225g dark chocolate
4 teaspoons cocoa powder	

Place the butter, sugar, cocoa powder and golden syrup in a saucepan and heat until the butter is melted and all of the ingredients have combined. Add the crushed biscuits and the raisins to the melted mixture in the saucepan. Stir them all together to combine.

Pour the saucepan mixture into the baking tin. Use a spoon or your hand to press the mixture down to form the base.

In a separate bowl, melt the dark chocolate (over a saucepan of boiling water or in a microwave oven). Pour the melted chocolate over the top of the biscuit mixture in the baking tin. Place the Tiffin in the fridge to chill for at least 1 hour.

Use a sharp knife to cut the Tiffin into pieces about 6cm square

RULES

- 1 ELIGIBILITY** – Entry is open to all. All horticultural exhibits must have been the exhibitor's property for at least three months – six months for cacti and pot plants. No time limit for flower arrangements, cookery and honey.
- 2 ENTRIES** – All entries to be on the official entry form to be sent, along with the correct fees, to the Entries Secretary. One Free Pass to the show, for use by the exhibitor ONLY, will be issued on arrival to stage exhibits. This schedule and additional entry forms are also available at annualshow.harrowinleaf.org.uk.
- 3 EXHIBITS PER CLASS** – No Exhibitor may enter more than one exhibit in any one class, except for entries in classes 32, 33 & 40, which must be dissimilar, and in the honey, mead and beeswax section. **Exhibitors will not be entitled to more than one award in any one class.**
- 4 SETTING-UP AND REMOVAL OF EXHIBITS** – Exhibitors are responsible for setting up their own exhibits. Exhibits to be brought on **Sunday between 1.00pm and 4.00pm** and Monday between 7.30am and 10.00am, **preferably on the Sunday. Please note, Headstone Manor & Museum will only allow vehicles on site, briefly, to drop off exhibits.** Trolleys and helpers should be available to transport exhibits. Exhibits must not bear any identifying marks. The exhibitor should check the exhibit card on the table and replace it face down. The vases provided must be used for all floral classes except for Floral Art and classes 43, 61, 64, 65, 67, 68 and 69. On Monday, judging will start at 10.15am. Exhibits can only be collected after 5pm, no vehicles on site until after 5.30pm.
- 5 EXHIBITORS FROM ONE GARDEN** – Two or more persons from the same garden, allotment or plant house may not exhibit separately in any one class unless otherwise stated.
- 6 EXHIBITS NOT ACCORDING TO SCHEDULE** – Exhibits that do not conform to the wording in the schedule or are entered in the wrong class will be disqualified. A judge will mark the entry card 'Not according to the Schedule'.
- 7 DONATED EXHIBITS** – Any exhibits not cleared by 5.30pm on Monday will be treated as donated and will be disposed of by the Show Committee.
- 8 ALTERING EXHIBITS** – After judging, no exhibit, or part of an exhibit, may be altered or removed until the end of the Show, except with permission of the Show Committee.

9 PROTESTS – Protests must be lodged with the Entries Secretary with a £1 deposit by 2pm Monday. This will be refunded if the protest is upheld.

10 WITHHOLDING PRIZES – Any awards may be withheld or modified if exhibits are considered not to be of an appropriate standard by the Judge.

11 CUPS AND TROPHIES – All cups and trophies awarded at the show must be safely returned to the Entries Secretary by 31st July 2021.

12 PRIZE DISTRIBUTION – This will take place at 4.30pm on Monday 31st August in the Show venue. Cash prizes will be available from 3pm on that day from the Entries Secretary; the exhibitor's pass **must** be produced. Cash prizes not collected at the Show will be donated to show funds.

13 JUDGING – Exhibits will be judged according to 2016 RHS Rules, unless otherwise stated. The Judge's decision will be final on the merits of the exhibits. The Show Committee reserves the right to make decisions on any other points in dispute.

14 POINTING/PRIZE MONEY

1 st	5 points	50p
2 nd	3 points	30p
3 rd	2 points	20p

Very Highly Commended and Highly Commended 1 point 10p

Double points for Class 4 and 179

In the case of equal points, the Exhibitor with most FIRSTS will win.

Open Challenge, Top Tray, Top Vase, Dahlia Championship and People's Choice awards are excluded from pointing.

15 NAMING OF EXHIBITS – Horticultural exhibits may be named if desired on cards which will be provided on request.

16 LIABILITY FOR LOSS – The show organisers will not be held responsible for any damage or loss to any person or property before, during or after the show howsoever caused.

17 A NOVICE is defined as an Exhibitor who has never won a first prize in the section in previous Harrow in LEAF Shows.

Any matters not covered by the above rules will be left to the discretion of the committee.

2019 CUP AND TROPHY WINNERS

Trophy	Awarded For	Winner
F J Osborne Cup	Society with Most Points	WHAGA
RHS Banksian Medal	Highest Points in Horticulture	G Weidle
Alan Brooks Shield	Runner Up in Horticulture	J Hillier
Garden News Shield	Highest Points Vegetables	J Salter
Nat. Veg. Soc. Medal	Best Exhibit Vegetables	P Weller
Harrow Post Cup	Highest Points Fruit	D Dolman
T A Ellement Cup	Highest Points Flowers	G Weidle
Chas Stenhouse Cup	Best Exhibit Flowers	S James
Sam Hulks Cup	Best Exhibit Pot Plants	J McLoughlin
Jim Pearmain Cup	Highest Points	G Weidle
Nat. Dahlia Silver Medal	Best Dahlia Exhibit	S James
Nat. Dahlia Bronze Medal	Runner Up Best Dahlia	P Weller
Dahlia Championship Cup	First Prize Class D	S James
Mrs Hurford Cactus Cup	Highest Points Cactus	I Kelly
G Dowling Cup	Best Exhibit Floral Art	P Crouch
Harrow Times Cup	Highest Points Wine	M Mayes
Macrae Cup	Best Exhibit Preserves	C Geheran
Harrow Show Cttee Cup	Highest Points Cookery	M Sharp
HS Charles of London Cup	Best Exhibit Crafts	J McLoughlin
HS Silver Jubilee Shield	Best Exhibit Painting	J Williams
Pinner Horticultural Cup	Best Exhibit Photography	C Corney
Junior Cup	Best Exhibit Junior Section	P Goldingay
Little Stanmore Allottee's Challenge Cup	Winner Open Challenge	F Goldingay

SPECIAL TROPHIES AND AWARDS

Top Tray	1 st P Weller	2 nd J Salter	3 rd T Suri
Top Vase	1 st G Weidle	2 nd T Suri	3 rd S Pali
People's Choice	1 st D Campbell	2 nd C Petitjean	3 rd D Dolman

The RHS Banksian Medal is awarded to the winner of the most prize money in the Horticultural section. The previous two years' winners, John Hillier 2018 and Graham Weidle 2019, are not eligible for the award in 2020.

The F J Osborne Cup is awarded to the society with the most points overall. The previous two years' winners, Newton Park Horticultural Soc 2018 and West Harrow AGA 2019, are not eligible for the award in 2020.

If you would be willing to help at the Show, please tick here.



Brian Cox Estate Agents
are proud to continue their support for the
Harrow in LEAF Annual Show in 2020

Established in 1984, we have worked with thousands of clients over the years, helping them to buy, sell and let many properties. The growth of our estate agency, in size and reputation, is down to us ensuring the highest standards throughout.

We also offer financial advice, guaranteed to help you get a great deal.

Call today and our friendly staff will be happy to speak to you.

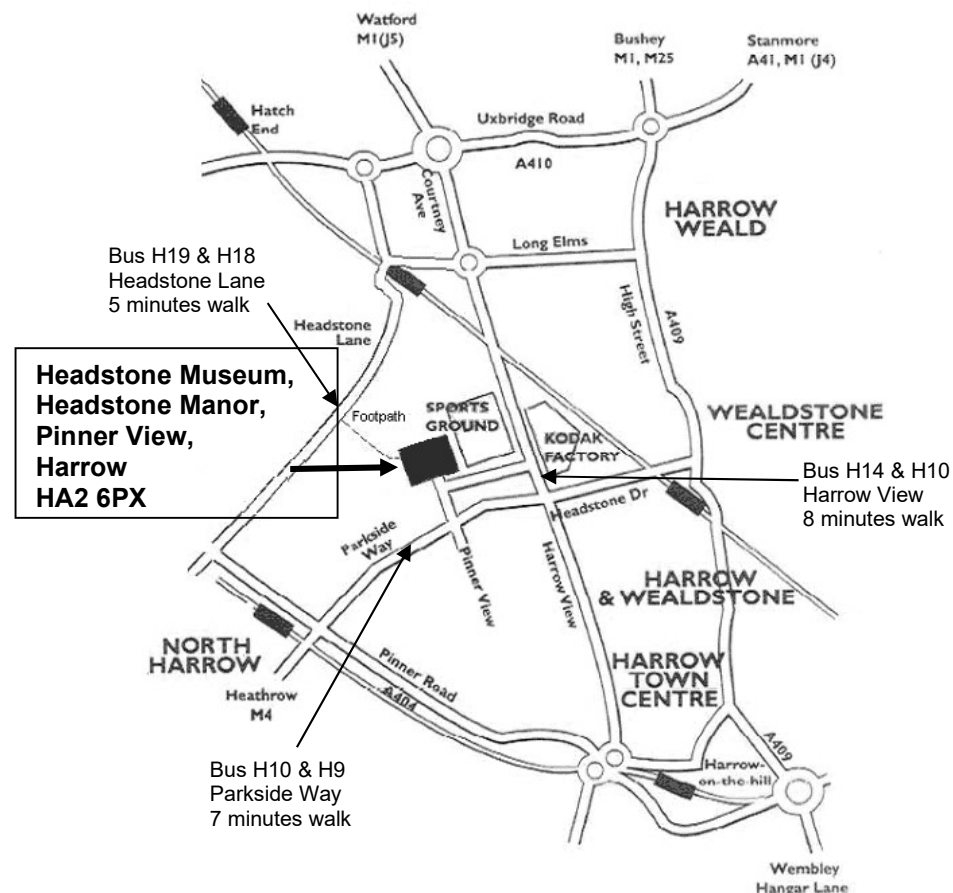
Visit us at
310 Station Road, Harrow Town Centre, HA1 2DX

Call us on
0208 912 0006

Or for a free valuation visit

www.brian-cox.co.uk

**Our advertisers are important to us
Please support them**



Car parking:

Limited free parking is available via the Pinner View entrance.
Please note, Headstone Manor & Museum will only allow vehicles on site, briefly, to drop off exhibits.

Membership: To join Harrow in LEAF, you can contact us by calling **07842789941** or by e-mailing **leaf.membership@gmail.com**
Membership costs £2.50 a year for individuals or £10 for societies and groups

For more information visit harrowinleaf.org.uk

Registered Charity No.1108144